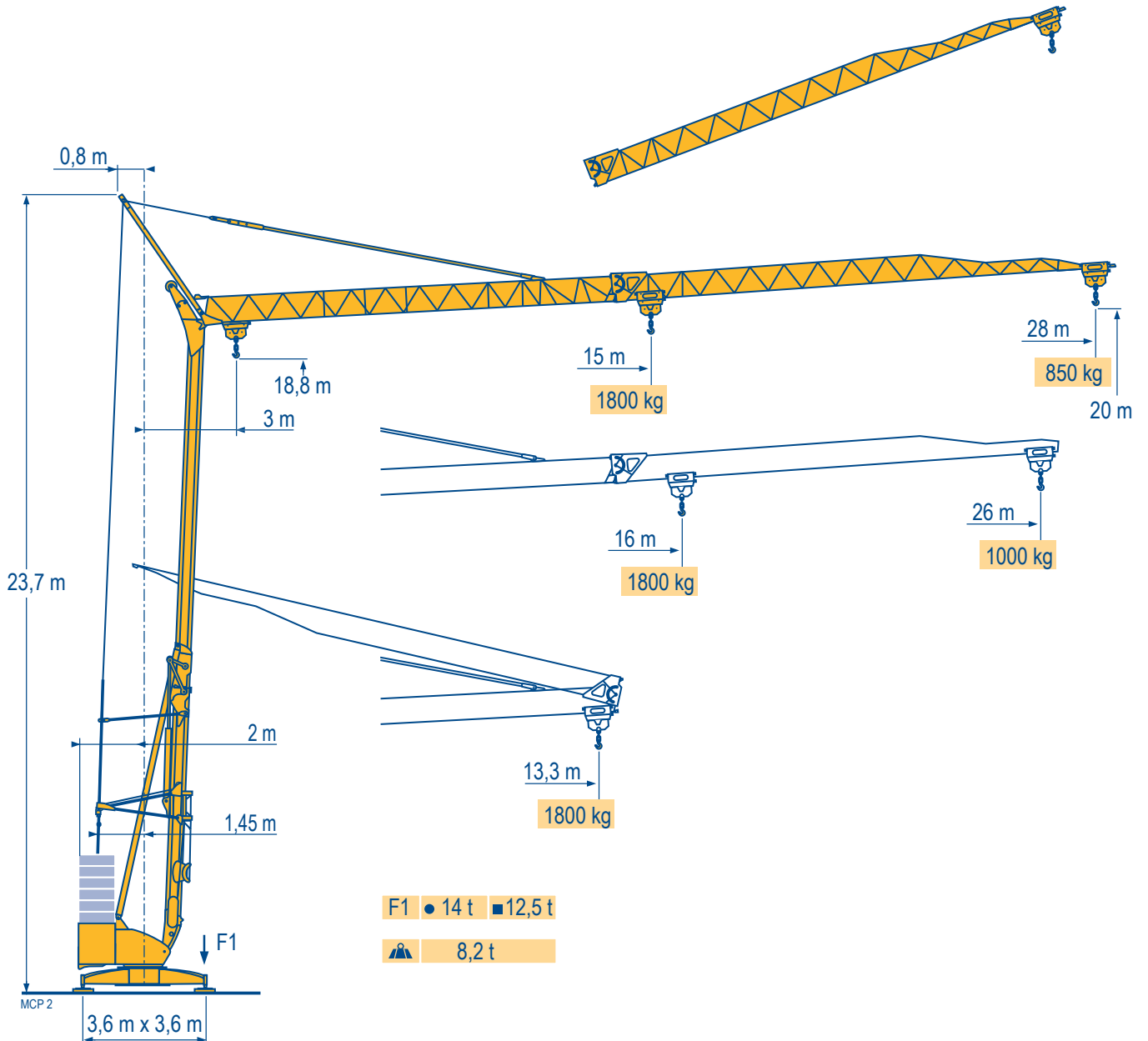
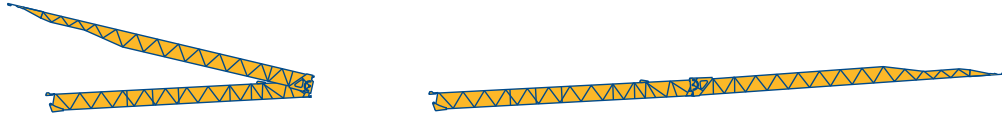


POTAIN

Igo 22



Courbes de charges
 Lastkurven
 Load diagrams
 Curvas de cargas
 Curve di carico
 Curva de cargas

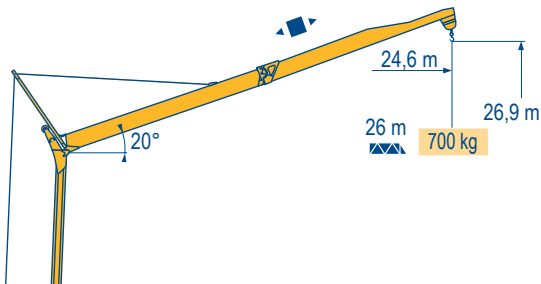
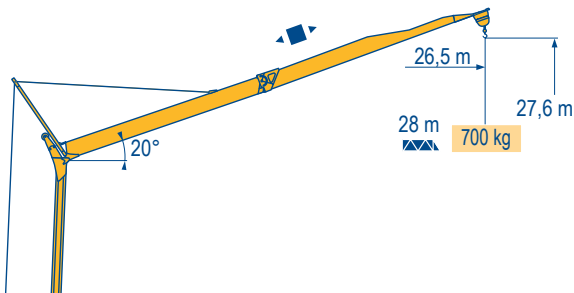


MCP 2

| | | | | | | | | | | | | | | | | | |
|------|---|---|---------|------|------|------|------|------|------|------|------|------|------|---------|-----|-----|--------|
| 28 m | 3 | ▶ | 13,3 m | 15 | 16 | 17 | 18 | 19 | 20 | 21 | 22 | 23 | 24 | 25 | 26 | 27 | 28 m |
| | | | 1800 kg | 1800 | 1670 | 1555 | 1450 | 1360 | 1275 | 1205 | 1140 | 1080 | 1025 | 975 | 930 | 890 | 850 kg |
| 26 m | 3 | ▶ | 13,3 m | 16 | 17 | 18 | 19 | 20 | 21 | 22 | 23 | 24 | 25 | 26 m | | | |
| | | | 1800 kg | 1800 | 1665 | 1555 | 1455 | 1370 | 1290 | 1220 | 1160 | 1100 | 1050 | 1000 kg | | | |

Flèche relevée
 Ausleger in Steilstellung
 Luffing jib
 Flecha izada
 Braccio impennato
 Lança inclinada

MCP 1



Igo 22

POTAIN



F

Chariot distributeur
 Réactions en service
 Réactions hors service
 A vide sans lest (ni train de transport) avec flèche et hauteur maximum.

D

Verfahrbare Laufkatze
 Reaktionskräfte in Betrieb
 Reaktionskräfte außer Betrieb
 Ohne Last, Ballast (und Transportachse), mit Maximalausleger und Maximalhöhe.

GB

Traversing trolley
 Reactions in service
 Reactions out of service
 Without load, ballast (or transport axes), with maximum jib and maximum height.

E

Carro distribuidor
 Reacciones en servicio
 Reacciones fuera de servicio
 Sin carga, sin lastre, (ni tren de transporte), flecha y altura máxima.

I

Carrellino distributore
 Reazioni in servizio
 Reazioni fuori servizio
 A vuoto, senza zavorra (ne assali di trasporto) con braccio massimo e altezza massima.

P

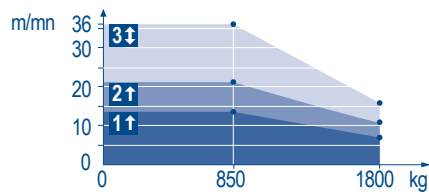
Carro distribuidor
 Reações em serviço
 Reações fora de serviço
 Sem carga (nem trem de transporte)- sem lastro com lança e altura máximas.

Mécanismes
Antriebe
Mechanisms
Mecanismos
Meccanismi
Mecanismos

MCP 3

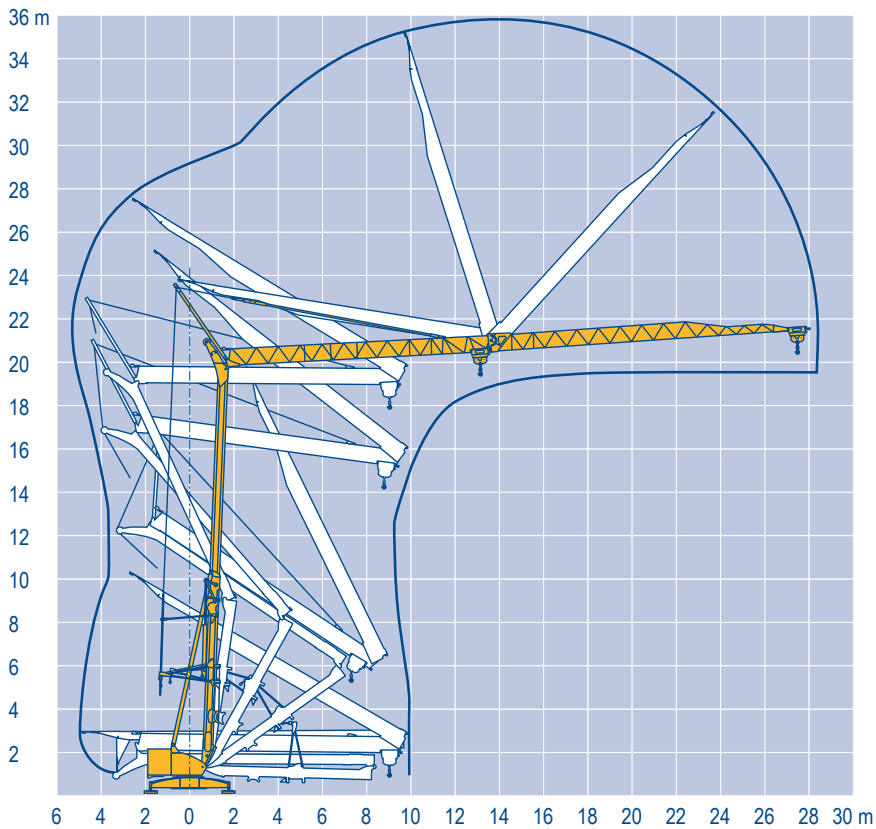
| | | | | | | | ch - PS hp | kW | |
|--|-------------------|-------------------------------|---------------------|---|-----------|-----------|---------------|-----|--|
| | 8 LVF 9 Optima | 230 V \neq 20 A 1 | m/min | ↑ 3,5 ↓ 3,5 | ↑ 7 ↓ 16 | ↑ 14 ↓ 36 | 3,3 | 2,4 | |
| | | | kg | 1800 | 1800 | 850 | | | |
| | | 230 V \neq 32 A 2 | m/min | ↑ 3,5 ↓ 3,5 | ↑ 11 ↓ 16 | ↑ 21 ↓ 36 | 5,2 | 3,8 | |
| | | | kg | 1800 | 1800 | 850 | | | |
| | | 400 V 3 | m/min | ↓ 3,5 | ↓ 16 | ↓ 36 | 7,5 | 5,5 | |
| | | | kg | 1800 | 1800 | 850 | | | |
| | 1 DVF 4 | - | m/min | 14 → 36 (0 → 850 kg) - 14 → 28 (850 → 1800 kg) | | | 1,5 | 1,1 | |
| | RVF 31 | - | tr/min U/min rpm | 0 → 0,8 | | | 2 | 1,5 | |
| CEI 38 | | | | IEC 38 | | | | kVA | |
| 230 V(+6% -10%) 50 Hz - 60 HZ \neq 400 V(+6% -10%) 50 Hz 480 V(+6% -10%) 60 Hz | | | | 230 V 20 A : 4,6 kVA 230 V 32 A : 7,4 kVA 400 V : 11 kVA 480 V : 11 kVA | | | | | |

8 LVF 9
Optima



Montage
Montage
Erection
Montaje
Montaggio
Montagem

MCP 1



Igo 22

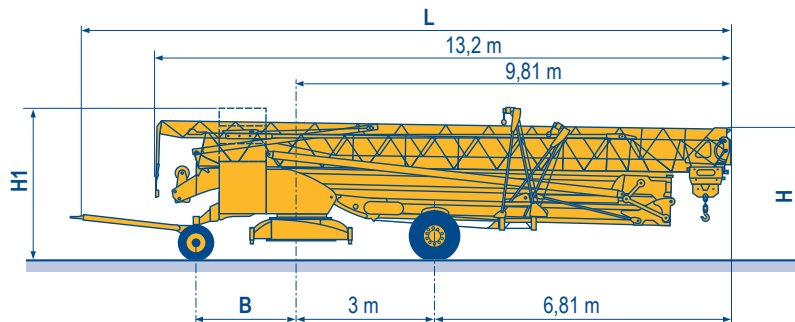
POTAIN

| F | D | GB | E | I | P |
|--------------|------------------|--------------------|------------------|----------------|------------------|
| | | | | | |
| Levage | Heben | Hoisting | Elevación | Sollevamento | Elevação |
| Distribution | Katzfahren | Trolleying | Distribución | Distribuzione | Distribuição |
| Orientation | Schwenken | Slewing | Orientación | Rotazione | Rotação |
| \neq | 50 Hz Einphasige | 50 Hz Single phase | 50 Hz Monofasica | 50 Hz Monofase | 50 Hz monofásica |

Transport
Transport
Transport
Transporte
Trasporto
Transporte

MCP 2

- DS51/S70 ○
- DS61/S80 ○
- DS61/S120 ○
- DS61/S125 ○
- DJ80/S120 ○
- DJ80/S125 ○
- DJ100/S120 ○
- DJ105/S125 ○
- DJ126M/S125 ○



| | L (m) | B (m) | H (m) | H1 (m) |
|-------------|-------|-------|-----------|-----------|
| DS51/S70 | 14,48 | 2,35 | 3,03/3,18 | - |
| DS61/S80 | 14,77 | 2,45 | 3,18 | - |
| DS61/S120 | 14,77 | 2,45 | 3,03/3,18 | - |
| DS61/S125 | 14,77 | 2,45 | 3,03/3,18 | - |
| DJ80/S120 | 14,77 | 2,45 | 3,05/3,20 | - |
| DJ80/S125 | 14,77 | 2,45 | 3,05/3,20 | - |
| DJ100/S120 | 14,77 | 2,45 | 3,05/3,20 | 3,21/3,36 |
| DJ105/S125 | 14,77 | 2,45 | 3,05/3,20 | 3,21/3,36 |
| DJ126M/S125 | 14,77 | 2,45 | 3,20 | 3,34 |

- **F**
Chantier
- D**
Baustelle
- GB**
Site
- E**
Obra
- I**
Cantiere
- P**
Estaleiro



Document commercial non contractuel. Pour toute information technique se référer à la notice correspondante.

Unverbindliches Vertriebsdokument. Für technische Informationen, siehe die entsprechenden Anweisungen.

This commercial document is not legally binding. For any technical information, please refer to the corresponding instructions.

Documento comercial non contractuel. Para cualquier información técnica, ver la noticia correspondiente.

Documento commerciale non vincolante, per tutte le informazioni tecniche fare riferimento al catalogo istruzioni.

Documento comercial não contratual. Para qualquer informação técnica complementar consultar as respectivas instruções.



Americas

Tel : +1 888 479 7278
Tel : +1 717 593 2000

Europe – Middle East – Africa

Tel : +33 (0) 4 72 81 50 00
Tel : +44 (0) 191 522 2000

Asia – Pacific

Tel : +65 6264 1188
Fax : +65 6862 4040

www.manitowoccrane.com

18, rue de Charbonnières - B.R.173
69132 ECULLY Cedex - France

Tél. : +33 (0) 4 72 18 20 20
Fax. : +33 (0) 4 72 18 20 00
www.manitowoccrane.com

Igo 22

Code J-89985-28_Réf. 2005 05 MCP 5

Copyright.Reproduction interdite © POTAIN 2005

Réalisation Secloc